

# MECHANICAL ENGINEERING WIRELESS CELLULAR ANTENNAS



UW Environmental Health & Safety (EH&S) provides the following safety information for University personnel who work in or near University locations where wireless cellular antennas are installed.

## SITE INFORMATION

**Address:** 3900 East Stevens Way, Seattle  
**Carrier (s):** Verizon  
**FCC Site #:** SE01124A  
**Antenna type:** Sector/Directional antennas  
**Co-locators:** None  
**Location(s):** Rooftop parapets  
**Site access:** Locked doors (3)  
**Last survey date:** August 12, 2018

- This building consists of 12 antennas grouped together in three sectors on the roof parapets.
- All measurements were below the limit for general public exposure to radiofrequency energy.

Location	RF Exposure Measurements	Hazard category
Ground level	Less than 0.05% of FCC general public exposure limit	1
Upper roof	Less than 20 % of FCC occupational exposure limit	1
Main roof	Less than 20% of FCC occupational exposure limit	1

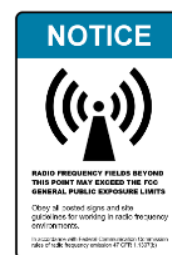
Figure 1 shows an aerial view of the rooftop where the antennas are located.



Figure 1: View from the roof.

## SIGNS AND BARRIERS

- Blue NOTICE signs and yellow barriers are located on the rooftop in front of the antennas.
- The signs indicate the radiofrequency field beyond this point could exceed the occupational exposure limit.
- **Do not loiter or stand directly in front of these screen enclosures.**



## AERIAL VIEW OF THE ANTENNAS

# WIRELESS CELLULAR ANTENNA LOCATIONS

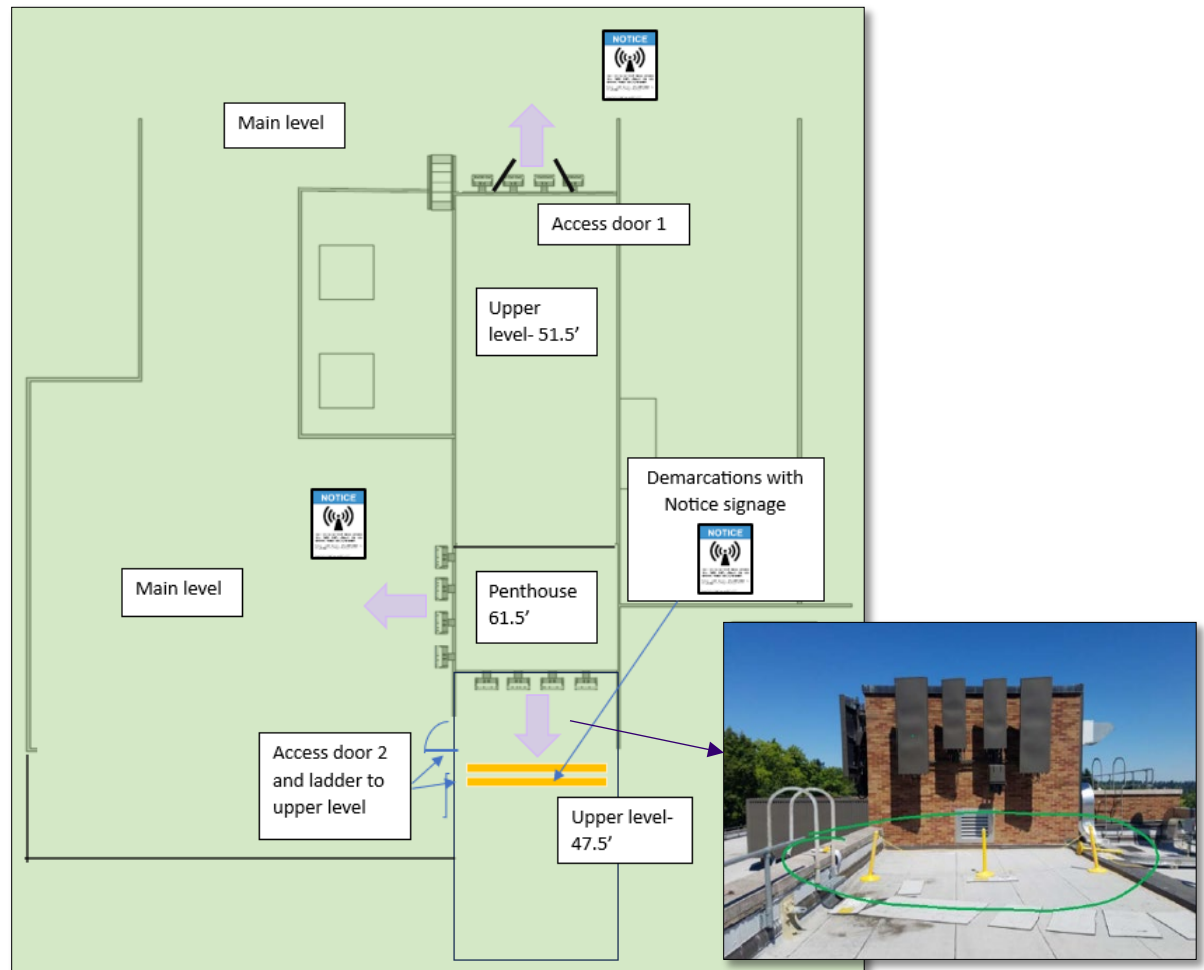


Figure 2: View looking down at the roof of Mechanical Engineering Building.

Symbols/ Color	Definitions	Signage
	Direction of mounted antenna or directional RF energy	NA
	Mounted antenna/panel	NA
	Floor demarcation/barriers	NA
Category 1	Area where RF fields are too weak to cause exposures greater than general public limit <b>SAFE FOR GENERAL PUBLIC</b>	No signage
Category 2	Area where RF fields could potentially be greater than general public limit but less than occupational limit <b>NOT SAFE FOR GENERAL PUBLIC BUT SAFE FOR WORKERS.</b>	

Table 1: Symbols and color legends, definitions and required posting.

Visit the [Radiofrequency: Wireless Cellular Antennas](#) page on the EH&S website for more information.

Contact EH&S at 206.543.0463 or [radsaf@uw.edu](mailto:radsaf@uw.edu) with questions.