



# MARY GATES HALL WIRELESS CELLULAR ANTENNAS

UW Environmental Health & Safety (EH&S) provides the following safety information for University personnel who work in or near University locations where wireless cellular antennas are installed.

## SITE INFORMATION

**Address:** 1851 Northeast Grant Lane, Seattle.  
**Carrier (s):** AT&T  
**Antenna type:** Sector/Directional antennas  
**Co-locators:** None  
**Location(s):** Rooftop penthouse on platform  
**Site access:** Locked door  
**Last survey date:** February 26<sup>th</sup>, 2021

- This building consists of 16 antennas grouped together in four sectors on the penthouse.
- All measurements were below the limit for general public exposure to radiofrequency energy.

Location	RF Exposure Measurements	Hazard category
<b>Penthouse roof level - 83' (same level as antennas' height)</b>	192% of FCC Occupational Exposure limit	<b>3</b>
<b>Penthouse roof level - below the antenna bottom</b>	More than 20% of FCC Occupational Exposure limit	<b>2</b>
<b>Main Roof Level - 70' (13 feet below bottom of antenna)</b>	Less than 10% of FCC Occupational Exposure limit	<b>1</b>

## AERIAL VIEW OF THE ANTENNAS

Figure 1 shows an aerial view of the rooftop and platform where the antennas are located.

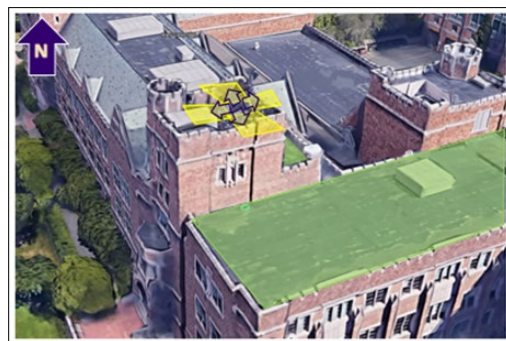


Figure 1: View from the roof.



Figure 2: Main roof - Category 1

## SIGNS AND BARRIERS

Yellow CAUTION signs are located directly below the antennas on the mounting brackets. The signs indicate the radiofrequency energy directly in front of the antennas may exceed the occupational limits.



# WIRELESS CELLULAR ANTENNA LOCATIONS

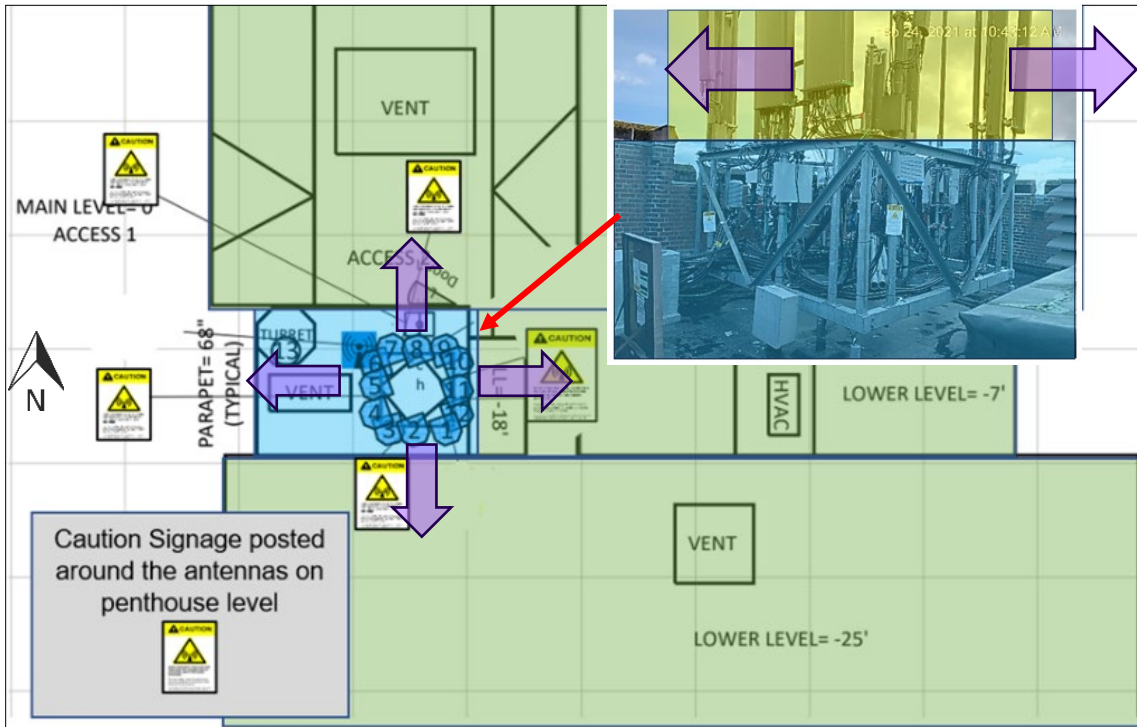


Figure 3: View looking down at the roof Mary Gates Hall.

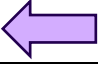



Symbols/ Color	Definitions	Signage
	Direction of mounted antenna or directional RF energy	NA
	Mounted antenna/panel	NA
Category 1	Area where RF fields are too weak to cause exposures greater than general public limit <b>SAFE FOR GENERAL PUBLIC</b>	No signage
Category 2	Area where RF fields could potentially be greater than general public limit but less than occupational limit <b>NOT SAFE FOR GENERAL PUBLIC BUT SAFE FOR WORKERS.</b>	
Category 3	Area where RF fields could potentially be greater than occupational worker limit but less than five times the occupational limit. <b>NOT SAFE FOR GENERAL PUBLIC. RESTRICTED FOR TRAINED WORKERS.</b>	

Table 1: Symbols and color legends, definitions and required posting.

Visit the [Radiofrequency: Wireless Cellular Antennas](#) page on the EH&S website for more information.

Contact EH&S at 206.543.0463 or [radsaf@uw.edu](mailto:radsaf@uw.edu) with questions.