



# HMC: PATRICIA STEELE WIRELESS CELLULAR ANTENNAS

UW Environmental Health & Safety (EH&S) provides the following safety information for University personnel who work in or near University locations where wireless cellular antennas are installed.

## SITE INFORMATION

**Address:** Yesler Terrace, 401 Broadway, Seattle,  
**Carrier (s):** T-Mobile  
**FCC Site #:**  
**Antenna type:** Sector/Directional antennas  
**Co-locators:** None  
**Location(s):** Rooftop – parapet and on platform  
**Site access:** Locked door (1)  
**Last survey date:** July 24, 2023

- This building consists of six antennas grouped together in three sectors on the main roof.
- All measurements were below the limit for general public exposure to radiofrequency energy.

## AERIAL VIEW OF THE ANTENNAS

Figure 1 shows an aerial view of the rooftop and platform where the antennas are located.

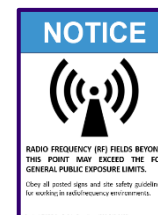


Figure 1: View from the roof.

Location	RF Exposure Measurements	Hazard category
Main roof- directly in front of beta and gamma sectors	Less than 95% of FCC general public exposure limit.	3
Main roof level (behind the stanchion barriers)	Less than 80 % of FCC Occupational Exposure limit	2
Main level	Less than 20% of FCC Occupational Exposure limit	1

## SIGNS AND BARRIERS

- Yellow CAUTION signs and orange barriers are located on the rooftop in front of the screen enclosures and directly in front of the antennas (refer to diagram below).
- Blue NOTICE signs and orange barriers are located on the rooftop as indicated in the RF location below.
- **Do not loiter or stand directly in front of these antennas or barriers.**



# WIRELESS CELLULAR ANTENNA LOCATIONS

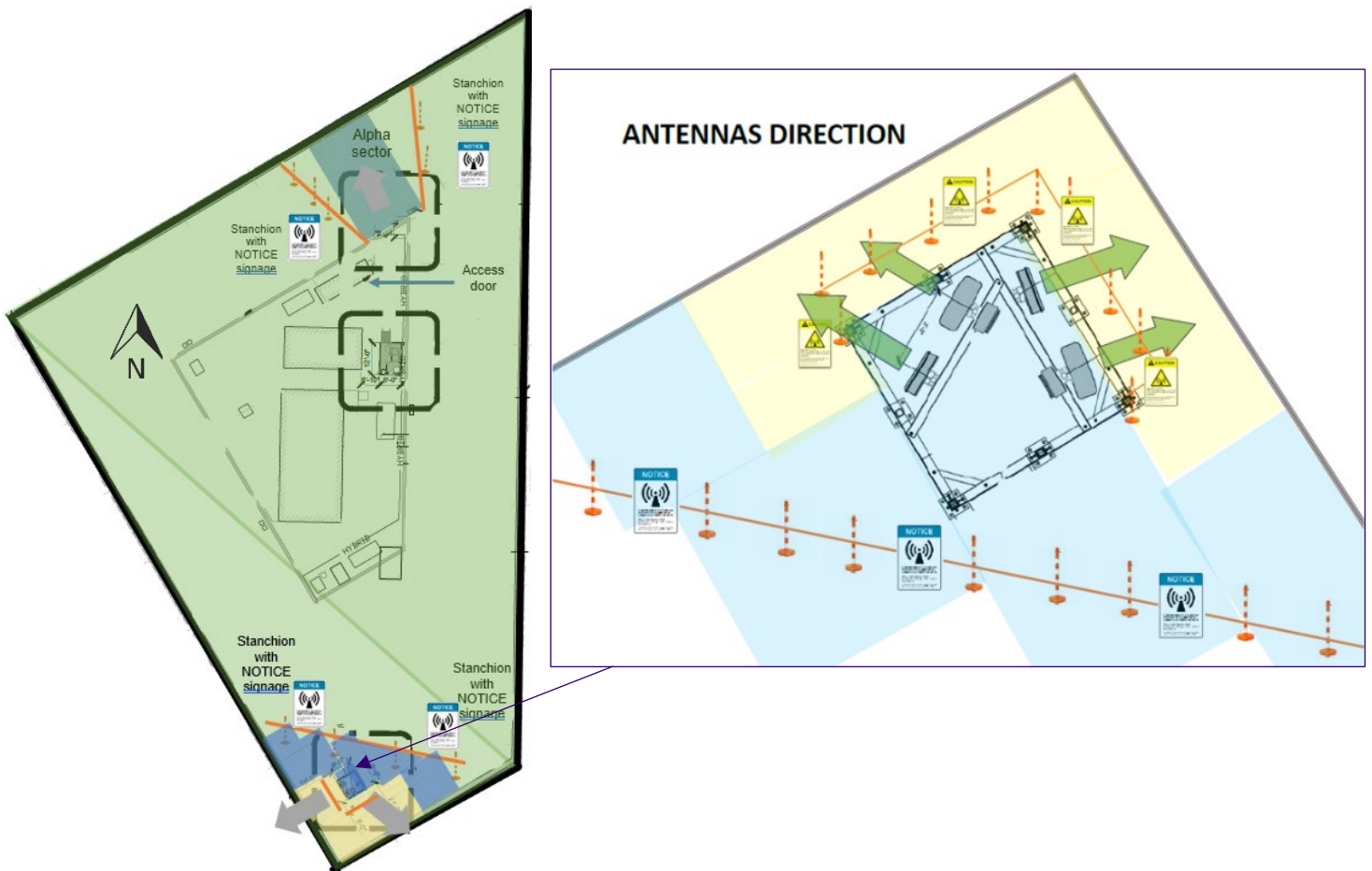


Figure 2: View looking down at the roof of Patricia Steele Building.

Symbols/ Color	Definitions	Signage
	Direction of mounted antenna or directional RF energy	NA
	Mounted antenna/panel	NA
	Stanchion/barriers	NA
Category 1	Area where RF fields are too weak to cause exposures greater than general public limit <b>SAFE FOR GENERAL PUBLIC</b>	No signage
Category 2	Area where RF fields could potentially be greater than general public limit but less than occupational limit <b>NOT SAFE FOR GENERAL PUBLIC BUT SAFE FOR WORKERS.</b>	
Category 3	Area where RF fields could potentially be greater than occupational worker limit but less than five times the occupational limit. <b>NOT SAFE FOR GENERAL PUBLIC. RESTRICTED FOR TRAINED WORKERS.</b>	

Table 1: Symbols and color legends, definitions and required posting.

Visit the [Radiofrequency: Wireless Cellular Antennas page](#) on the EH&S website for more information.  
**Contact EH&S at 206.543.0463 or [radsaf@uw.edu](mailto:radsaf@uw.edu) with questions.**