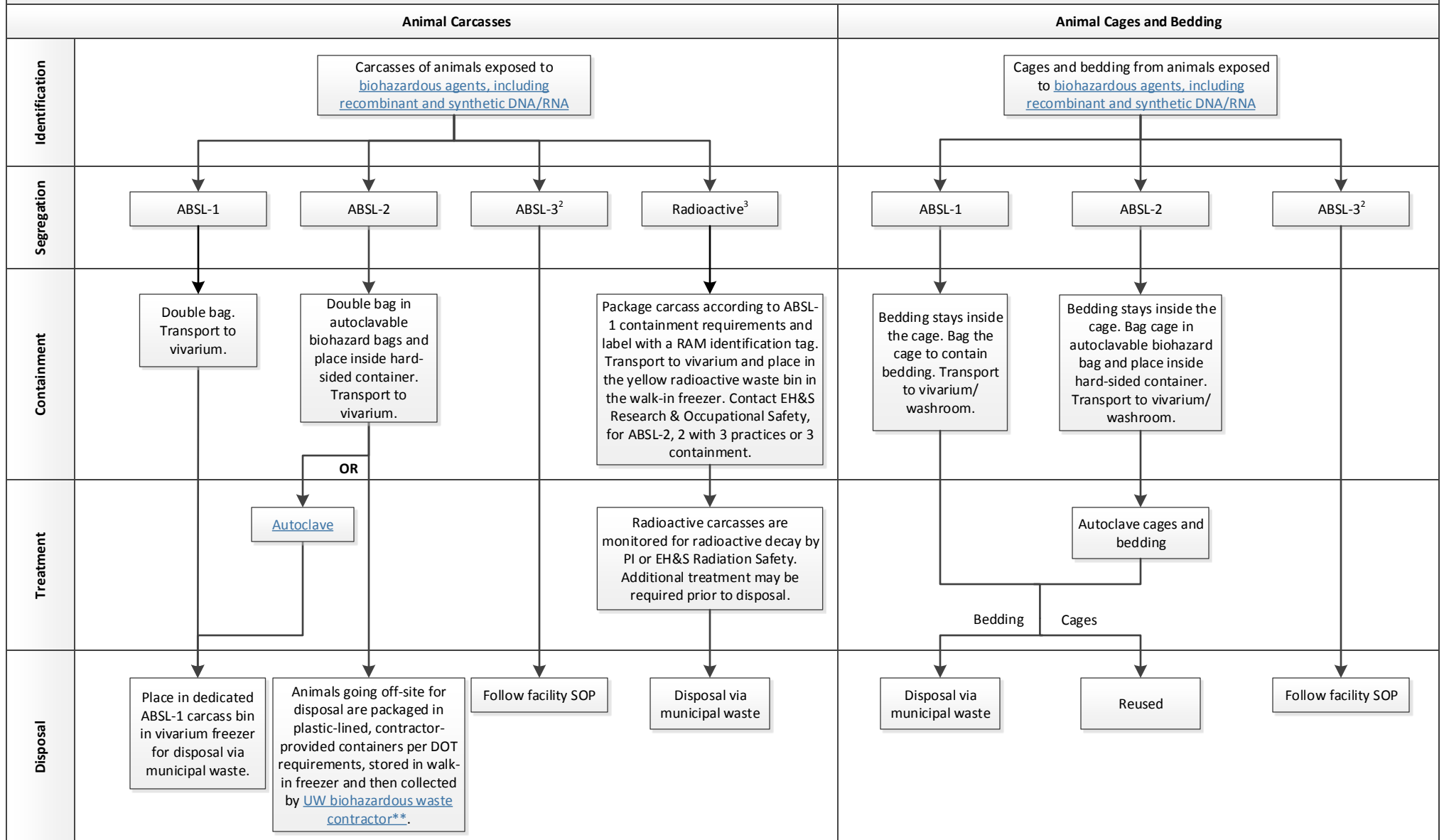


University of Washington Biohazardous Waste Streams Animal Research¹



For more information about the procedures in your specific facility, contact the [Department of Comparative Medicine Facility Supervisor](#)

¹This flowchart is intended for animal biohazardous waste streams originating outside of centralized vivarium and is not inclusive of all animal species.

²ABSL-3 waste will be handled in centralized vivarium. Follow facility specific SOPs.

³This waste stream only covers short-lived isotopes. For long-lived isotopes, contact EH&S Radiation Safety.

Treatment & Disposal Services: **UW Biohazardous Waste Contractor (account set-up required: biowaste@uw.edu)

EH&S Research & Occupational Safety

Phone: 206.221.7770

E-mail: ehsbio@uw.edu

EH&S Radiation Safety

Phone: 206.543.0463

E-mail: radsaf@uw.edu

